



# GAT MONTHLY MEMBERSHIP PROGRESS REPORT

Results as of: 5/31/2022

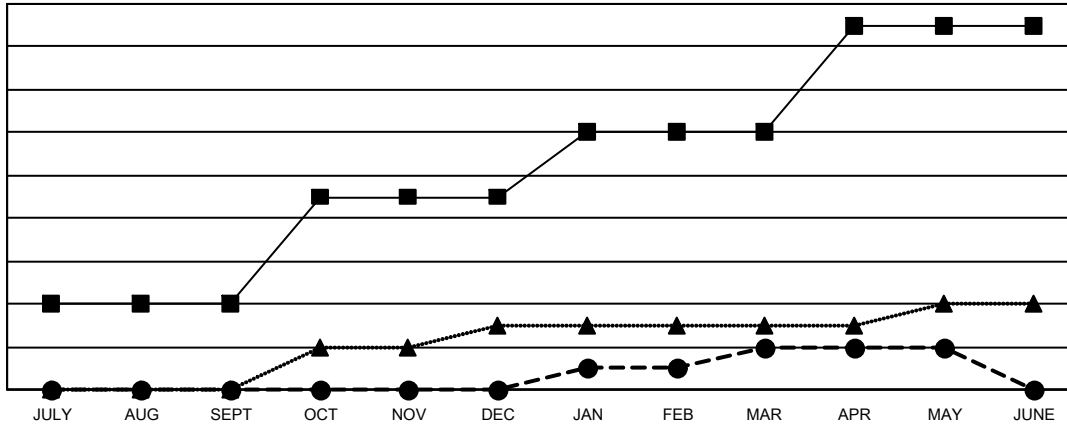
Multiple District 13

LOCATION: OHIO

Clubs			
RESULTS FOR 2021-2022			
QUARTER	NEW CLUB GOAL	NEW CLUBS	DROPPED CLUBS
JULY/AUG/SEPT	4	0	3
OCT/NOV/DEC	5	0	3
JAN/FEB/MAR	3	2	2
APR/MAY/JUNE	5	0	0

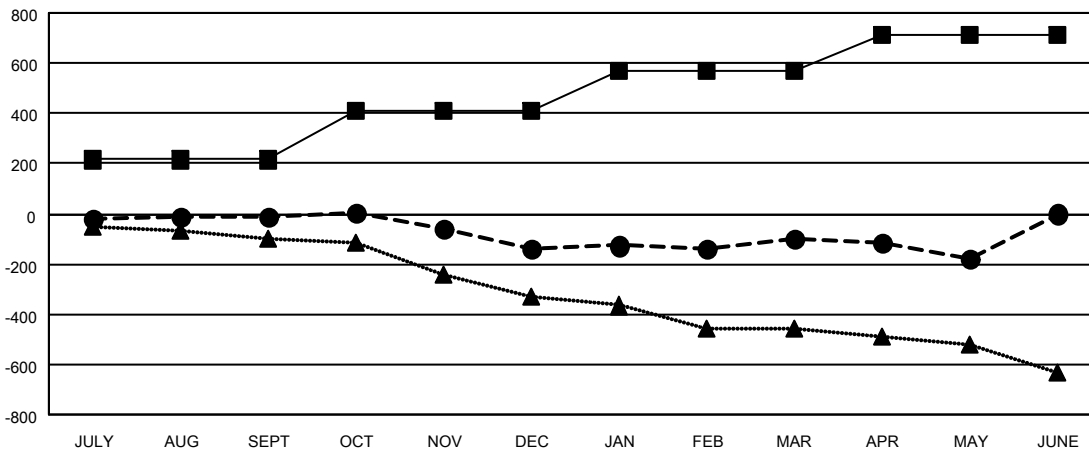
Members			
RESULTS FOR 2021-2022			
QUARTER	MEMBER GROWTH NET GOAL	MEMBER GROWTH ACTUAL	DROPPED MEMBERS ACTUAL (including transfers)
JULY/AUG/SEPT	215	242	221
OCT/NOV/DEC	196	228	342
JAN/FEB/MAR	160	250	185
APR/MAY/JUNE	142	145	216

GOALS AND ACTUAL NEW CLUBS CUMULATIVE



- - CURRENT YEAR GOALS FOR NEW CLUBS
- - CURRENT YEAR ACTUAL NEW CLUBS
- ▲ - LAST YEAR ACTUAL NEW CLUBS

GOALS AND ACTUAL MEMBERS CUMULATIVE



- - MEMBER GROWTH NET GOAL
- - MEMBER GROWTH ACTUAL
- ▲ - LAST YEAR MEMBERSHIP ACTUAL

<b>DROPPED CLUBS: 8</b>	
<b>DROPPED MEMBERS</b>	
DECEASED	212
CLUB CANCELLED	9
OTHER	743
<b>TOTAL</b>	<b>964</b>

213 CLUBS OF 376 ADDED 1 OR MORE NEW MEMBERS

[CLICK HERE FOR CUMULATIVE MEMBERSHIP DATA](#)

GENDER DISTRIBUTION	
MALE	6,953 (69.09%)
FEMALE	3,096 (30.77%)
NON BINARY	0 (0.00%)
PREFER NOT TO ANSWER	14 (0.14%)
<b>TOTAL FAMILY UNIT MEMBERS</b>	<b>2,078</b>
<b>FAMILY MEMBERS PAYING HALF DUES</b>	<b>1,057</b>